

# Instructions for installing your new standard cable modem.

## Step One: Disconnect your old modem

- Turn off computer.
- Unplug modem power adapter (C) from back of electrical wall outlet.
- Unplug power adapter (C) from back of modem.
- Disconnect coaxial cable (A) from back of modem.
- Disconnect Ethernet cable (B) from back of modem.
- Disconnect Ethernet cable (B) from back of computer.

## Step Two: Install your new modem

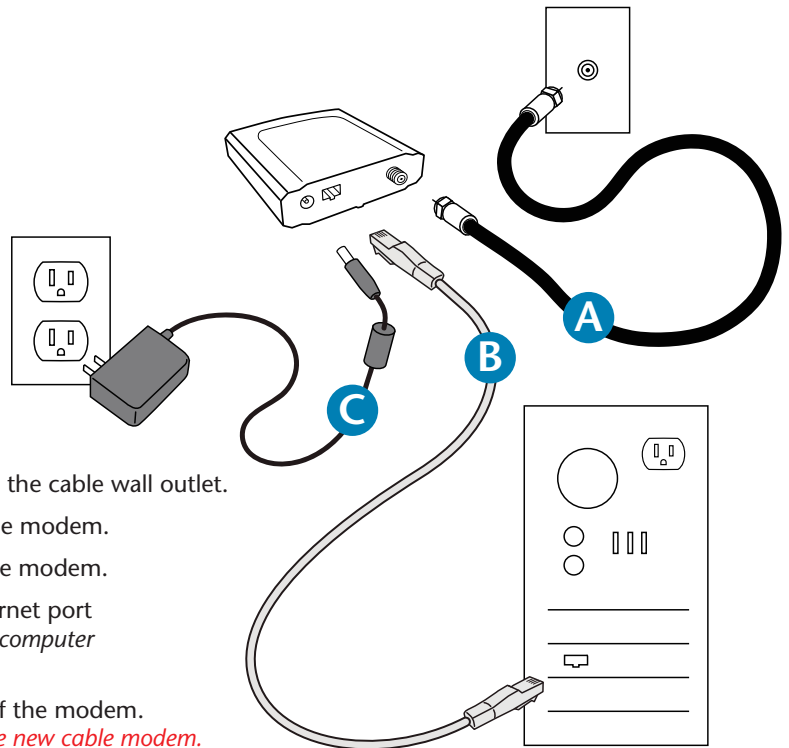
- If disconnected, connect one end of the coaxial cable (A) to the cable wall outlet.
- Connect other end of the coaxial cable (A) to the back of the modem.
- Connect one end of the Ethernet cable (B) to the back of the modem.
- Connect the other end of the Ethernet cable (B) to the Ethernet port of your computer. (*Computers are not all built alike and your computer may look different from the one pictured above.*)
- Plug in the new modem power adapter (C) in to the back of the modem.  
*Important: use only the power adapter that is supplied with the new cable modem.*
- Plug the new cable modem power adapter (C) in to the electrical wall outlet.
- Allow 2-5 minutes for the cable modem to connect to Midcontinent's network.
- Once the Power, Ethernet, DS and Ready lights are lit, the modem is successfully installed.
- Restart your computer.
- Open an Internet browser and visit [www.midcocomm.com](http://www.midcocomm.com) to test your Internet connection.

## Troubleshooting

If the modem lights do not come on or you are having problems connecting to the Internet:

- Turn off your computer.
- Unplug the modem power adapter (C) from the electrical wall outlet.
- Wait 15 seconds, then plug modem power adapter (C) back in to electrical wall outlet.
- Restart your computer.
- Open your Internet browser and visit [www.midcocomm.com](http://www.midcocomm.com) to test your Internet connection.

*If you are still experiencing problems after completing the above troubleshooting steps, please call us at 1-800-888-1300 for assistance.*



### Installation Components:

Standard Modem  
A. Coaxial Cable  
B. Ethernet Cable  
C. Cable Modem Power Supply

